



A kid's
place

A KID'S PLACE TAMPA BAY

2018/19 ANNUAL REPORT

CELEBRATING
10 YEARS

A 10 YEAR SNAPSHOT of a kid's place



2008

- Groundbreaking of A Kid's Place



2011

- Licensed for 60 children
- Opened Trey Curry Foundation home
- Sandy MacKinnon challenged the community with a \$1M dollar matching campaign
- Expanded the classrooms to 5 days a week
- Added / Built a resource & donation building
- Cared for 447 children



2009

- Licensed for 24 children
- Opened the Lazydays and Sammy Sullivan homes
- Welcomed our 1st family 6/19
- Opened elementary classroom

2012

- Purchased property to expand House Parent Model
- Awarded Non-Profit of the year award
- Bronze sculpture dedicated in honor of Dottie Berger MacKinnon

2013

- Dottie Berger MacKinnon, our Founder and Visionary:
Feb. 19, 1942 – Oct. 13, 2013
- First group of teens attended homecoming
- CSI donated and built an onsite basketball court
- Cared for 800 children

2010

- Licensed for 48 children
- Opened the Dottie Berger MacKinnon and Duke homes
- Introduced our 3 day a week pre-k and toddler classrooms
- Kicked off our 1st summer camp
- Cared for over 291 children



2014



- Dottie Berger MacKinnon inducted into the Florida Women's Hall of Fame
- A Kid's Place and Kids Charity of Tampa Bay joined forces and became one organization
- Hosted school supply and Christmas drives for the children at A Kid's Place and an additional 2,000 foster children in the greater Tampa Bay Area

2015

- Built a New Website
- Celebrated over 100,000 bed nights!
- Launched The Guardian Society
- Cared for over 1000 children

2016

- A Kid's Place reached our \$300,000 endowment goal and will receive matching funds from the Community Foundation.
- Hosted our 1st Fostering Hope Black Tie Gala
- Expanded Discovery Club and after school programs
- Purchased home for house parent support



2017

- Became members of the Florida Coalition for Children
- Implemented I-station a reading comprehension and math Program
- Purchased a 15 passenger Van & expanded our parking lot

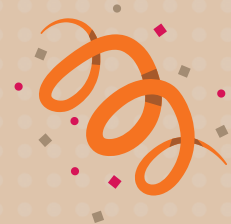


2018

- Built a new toddler classroom thanks to Leadership Tampa Bay
- Expanded our Independent Skills Classes for our young adults
- Invested \$1 million dollars for our long-term sustainability
- Received Platinum ratings by Guidestar

2019

- Became accredited by CARF International
- Launched a New Website
- Built a new Education Center/Computer Lab
- Celebrated 10 years of keeping Brothers and Sisters Together!



A KID'S PLACE OFFERS A UNIQUE & SAFE

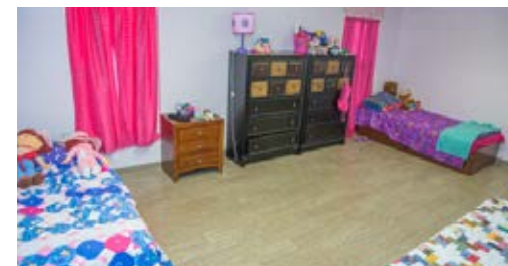
60-BED FACILITY ON FIVE ACRES OF LAND



Founded by Dottie Berger MacKinnon and a community of caring leaders and philanthropists, A Kid's Place was established with children's best interest in mind.

Brothers and sisters reside in a safe home-like setting with live-in house parents in one of the five (5) homes located on our five acre campus built to resemble a neighborhood cul-de-sac.

The children benefit from a family "house-parent" model and often times this is the first positive family setting they have been exposed to in their young lives. Keeping siblings together is paramount to the children and their development; providing a safe, stable, and loving environment in an otherwise traumatic period in their lives.



200,000+

BED NIGHTS PROVIDED SINCE INCEPTION

bed nights are nights a child is tucked safely in a warm bed with clean pj's and a full tummy



CELEBRATING
10 YEARS

WE ARE A BIG FAMILY!
EVERY WEEK WE CONSUME
AND USE:

30 gallons of milk

70 pounds of fresh fruits
and vegetables

75 boxes of cereal

175 loads of laundry

400 gallons of gasoline

THE DOTTIE BERGER MACKINNON *Guardian Angel Award*

This award recognizes a person, persons, or organization that embodies the compassionate spirit, values, and commitment to help abused and neglected children. Qualities include: passion, tenacity, perseverance, commitment, advocacy - serving as a voice championing children's rights; and vision - seeing and leading.



Julie Weintraub

Gold & Diamond Source

2019 RECIPIENT

GOLD & DIAMOND
SOURCE

SPRING INTO ACTION

HOW YOU CAN HELP



HOST A COMMUNITY FUNDRAISER

From golf tournaments to dances, art shows and 5K races, there are countless ways to inspire and support.



SOCIAL MEDIA

Celebrate your birthday or special milestone on Facebook or other social media platforms to help raise money for essential needs.



AMAZON SMILE

Amazon Smile is a program where Amazon donates 0.5% back when you choose A Kid's Place as your charity on smile.Amazon.com.



AKIDSPLACETB.ORG



PLEDGE YOUR BIRTHDAY

Throw a party and ask for donations instead of gifts from loved ones.



HOST A DRIVE OR COLLECTION

Organize a drive and make it a fun contest between employees or students as to who can collect the most items.



SIBLINGS STAYING CONNECTED

OUR SIBLINGS CONNECTED PROGRAM AND
HOUSE PARENT MODEL ARE WHAT MAKE
A KID'S PLACE UNIQUE,

7 MONTHS

AVERAGE LENGTH OF STAY FOR
A CHILD AT A KIDS PLACE

42 NUMBER OF SIBLING GROUPS

SERVED LAST YEAR AT A KIDS PLACE

9 YEARS OLD

the average age of a
child at a kids place

CELEBRATING
10 YEARS

TAKE 5 WITH NORMAN COOKSON

Norm and Heidi Cookson have been house parents at A Kid's Place for over 8 years! Spending time in foster care as a child, Norm is passionate about being able to help kids during their painful time and being a positive role model for them.

WHAT WOULD YOU NAME THE AUTOBIOGRAPHY OF YOUR
LIFE?

You must have an Angel

IF YOU COULD LEARN TO DO ANYTHING, WHAT WOULD IT
BE?

Sports Commentator

IF YOU WERE A CRAYON, WHAT COLOR WOULD YOU BE?

Blue

WHAT THREE TRAITS DEFINE YOU?

Cooking, Humor, Being cynical

WHAT IS THE BEST MEAL YOU HAVE EVER HAD?

One I made - Seafood Casserole

WHAT IS A SECRET THAT NO ONE KNOWS?

I can sew and make anything

WHAT ARE YOU PASSIONATE ABOUT?

Kids and trying to help them with their
self esteem.

WHO WOULD YOU MOST LIKE TO SWAP PLACES
WITH FOR A DAY?

My wife, to see how she thinks.

WHAT IS YOUR FAVORITE THING ABOUT WORKING
AT A KID'S PLACE?

The ability to help kids through the
pain of the day

WHERE'S YOUR FAVORITE PLACE IN THE
WORLD?

Florida - we have the best weather.



NORM TAKING BELLA AND SARA TO THE
FATHER DAUGHTER DANCE

CELEBRATING
10 YEARS

WHAT MAKES US SPECIAL

MAY IS FOSTER CARE AWARENESS MONTH



85% OF THE CHILDREN
we serve are part of a
SIBLING GROUP

6/9/09

DATE OUR FIRST CHILD WAS TAKEN IN –
WHICH WAS A SIBLING GROUP OF THREE

SINCE OPENING ITS DOORS IN 2009,
A KID'S PLACE HAS TOUCHED THE LIVES OF



over
1,487
CHILDREN

more than
648
FAMILIES

MEET OUR BOARD OF DIRECTORS

OFFICERS & DIRECTORS

Adam H. Palmer (Chair) - Graystone Consulting
Mark Tubb (Vice Chair) - Aberdeen Advisors, Inc.
Linda C. Hanna, Esq (Secretary) - Linda C. Hanna, P.A.
Dee Morgan (Treasurer) - MetLife

Joe Troy - Quality Distribution
DeDe Grundel - Friends of Joshua House Foundation
Fred Lay - Construction Services, Inc. of Tampa
Honorable Tracy Sheehan - Hillsborough Circuit Court
Sen. Tom Lee - Sabal Homes of Florida, Inc.
Steve Ratcliff - General RV
Terry Curry - Trey Curry Foundation
Honorable Daryl Manning - Hillsborough County Court
Gil Singer - Marcadis Singer P.A.
Audie Canney - Aaim Consulting Services, LLC.
Joe Myers - Lazydays Employee Foundation
Erik Fischer - Levin Financial
Beth Bradburn - Homes by WestBay
Art Schultz - Zenith American Solutions
Michael Johnson - Skyway Capital Markets

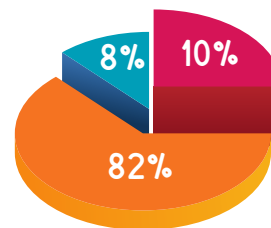
ADVISORY BOARD

A.D. "Sandy" MacKinnon
Corneilia Corbett
Don Wallace
Gene McNichols
Sheriff David Gee
Sheriff Chad Chronister
Steve Yerrid
Major Christi Esquinaldo

82% GOES TO SUPPORT PROGRAM SERVICES

2018/19 FINANCIALS

EXPENSES



PROGRAM	\$3,006,000
MANAGEMENT & ADMINISTRATION	\$353,000
FUNDRAISING	\$299,000

TOTAL: \$3,658,000

REVENUE

STATE & FEDERAL GRANTS	\$2,479,000
INDIVIDUAL CONTRIBUTIONS	\$1,136,000
INVESTMENTS	\$79,000
OTHER	\$43,000

TOTAL: \$3,737,000

CELEBRATING
10 YEARS

2018 / 19 VOLUNTEER IMPACT

417 NUMBER OF
VOLUNTEERS

7,594

NUMBER OF HOURS
COMPLETED BY VOLUNTEERS

\$193,115.42

total value of community
service projects &
efforts completed by
volunteers



Keeping brothers and sisters together in foster care is the heart of our work. But what makes that heart beat? It's the hundreds of volunteers in our community!

Volunteers contribute their time, their energy, and their hearts at every corner of A Kid's Place. Some volunteers give a specific time each week, while others help out every once in a while. Some are students, while others have a bit more life experience. No matter their age and stage of life, A Kid's Place values each and every one of our volunteers.

They strengthen and lift up our homes, make days brighter, lessen the load, and improve the lives of our children.





GEARING UP FOR BACK TO SCHOOL



THE TODDLER CLASSROOM

The Toddler Classroom at A Kid's Place is often the first time children between the ages of two and three have been in an organized classroom.



OUR PRE-K PROGRAM

Our Pre-K Program acts as a springboard for our three and four year-olds to succeed in public school Kindergarten.



HILLSBOROUGH COUNTY CLASSROOM

The Hillsborough County Classroom at A Kid's Place offers small classes and individual attention by a Hillsborough County teacher.



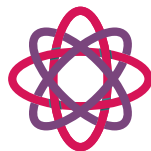
OUR EDUCATION CENTER / COMPUTER LAB

Our Education Center is a dedicated space for children to do their homework, receive one-on-one tutoring, participate in online classes and virtual school, and apply for jobs.



THE DISCOVERY CLUB

The Discovery Club focuses on science projects and experiments and also provides assistance for those who have school projects to complete.



SUMMER CAMP

Geared toward children between the ages of three and twelve, 85% of summer camp is focused on S.T.E.A.M. (science, technology, engineering, arts, and mathematics).



ANNUAL GOLF CLASSIC PRESENTED BY HOMES BY WESTBAY | OCTOBER 2020

A Kid's Place Annual Golf Classic is quickly becoming one of our most beloved traditions. Taking place at the beautiful Avila Golf and Country Club, the Golf Classic allows par-level players as well as weekend duffers a chance to experience hole contests, exciting prizes, and live auctions. Please join us for a great golf experience as we raise funds for abused, abandoned, and neglected children throughout the Tampa Bay area.



HOLIDAY STROLL | DECEMBER 2020

Beloved holiday traditions hold a special place in the hearts of all of us, and A Kid's Place Home is Where the Heart is Holiday Stroll is fun and festive evening that many of our supporters look forward to every year. This time-honored event is a beloved holiday tradition that kicks off the holidays here in Tampa. The progressive dinner features homes decorated in their own unique holiday style setting the tone for an evening of merriment as we stroll and celebrate the season.



A KID'S PLACE FOSTERING HOPE BLACK TIE GALA | FEBRUARY 2020 & 2021

A Kid's Place Fostering Hope Black Tie Gala is a fabulous evening devoted to raising funds and awareness for children in foster care and allows guests to escape to a magical evening. Guests will dine on decadent cuisine, bid on exciting silent and Live Auctions items, and dance the night away to toe tapping live music!

SHOP OUR CANDLES

100% of the proceeds help foster children living at A Kid's Place. Your purchase provides a safe, loving and nurturing home for brothers and sisters to stay together during their time in care.

Our candles are inspired by the children living at A Kid's Place and made locally by Seventh Avenue Apothecary.



TOGETHER, WITH OUR COMMUNITY PARTNERS, KID'S PLACE OFFERS:

RESIDENTIAL CARE

We provide a variety of services which meet the social, educational, medical, and psychological needs of each child.

EDUCATION PROGRAMS

Not only do our children study their ABC's and 1-2-3's, they are also inspired to learn and grow. From the alphabet to numbers, science to imaginative play, our kids are steeped in fun and learning.

HOUSE PARENT MODEL

A Kid's Place is based on a live-in House Parent model that allows brothers and sisters to live on-site with House Parents who provide a healthy and nurturing home.

INDEPENDENT LIVING

With our Independent Living Program, youth participate in various training to include: personal health and hygiene, basic cooking and cleaning, financial literacy, employment, and volunteering.

LEARN MORE AT WWW.AKIDSPLACETB.ORG

CELEBRATING
10 YEARS

HELP US TO ENSURE THAT EVERY FOSTER CHILD IN NEED HAS A safe, loving & nurturing place to call home

Thanks to the vision of Dottie and caring individuals and partners like you, A Kid's Place of Tampa Bay has grown into a beautiful and safe space for foster children. From our expanding campus to our nurturing staff to the daily needs of our kids, your generosity has helped us grow and make a meaningful difference. Thank you for believing in our mission and being a beacon of light for our children.

MAKE A DONATION
TODAY AT
akidsplacetb.org



Now, with great plans for the future, we need you now more than ever! Plans to expand our programs, build a recreation center, and offer more robust services for the children we serve.

You can be the person to make a difference. To change the world of the brothers and sisters living at A Kids Place.

Together we can achieve our plans for the future, because no child should go to bed hungry or scared.

Make a difference today by donating.



MAKE A DONATION AT AKIDSPLACETB.ORG

THANK YOU FOR HELPING US PROVIDE A
SAFE, LOVING & NURTURING
HOME FOR OUR FOSTER CHILDREN



*Your generosity changes the lives
of the children we serve! Thank
you for being a part of our village.*



GUARDIAN SOCIETY



A "Guardian" is a protector or guard; often, a keeper for children who are unable to protect themselves. Generous philanthropic support is crucial to the success of A Kid's Place. With extraordinary commitment from our donors, we are able to give foster children the resources they need. Through your contributions, you are a guardian to our children. By being part of The Guardian Society, you are supporting Dottie Berger MacKinnon's vision of caring and giving to children who have been abused, neglected, and abandoned.

Our Sustainer Angels are an elite group of philanthropic individuals and companies who have pledged to make significant annual contribution to A Kid's Place each year for three to five years.

DOTTIE'S GUARDIAN ANGELS | \$50,000 AND UP

LazyDays Employee Foundation Inc.

THE ANGELS | \$1,000 – \$9,999

The Stacey Borell Family Foundation

THE ARCHANGEL | \$10,000 – \$49,999

Cornelia and Dick Corbett

Laura and Fred Lay

The MacKinnon Family Foundation

The New York Yankee Foundation

Debbie and Joseph Troy



SPECIAL THANKS TO OUR 2018 / 2019 DONORS

OUR ANNUAL CONTRIBUTORS INCLUDE INDIVIDUAL DONORS, CORPORATIONS, GRANTS, AND FOUNDATION GIFTS DURING THE FISCAL YEAR OF JULY 1, 2018 – JUNE 30, 2019. A KID'S PLACE VALUES EVERY DONATION AND IF WE HAVE INADVERTENTLY MISPELLED OR NOT INCLUDED YOUR NAME, WE SINCERELY APOLOGIZE.

DOTTIE'S ANGELS | \$50,000 AND UP

Homes By WestBay

LazyDays Employee Foundation Inc.

Lightning Foundation

Quality Distribution, Inc.

The Spurlino Foundation

SPECIAL THANKS TO OUR 2018 / 2019 DONORS

ANGELS WINGS | \$25,000 – \$49,000

Tony and Beth Bradburn Just in Queso Foundation Lightning Community Hero of Tomorrow - Gabbie Gillen Arthur and Krista Schultz
John and Laurie Calfee Lightning Community Hero - Fred and Laura Lay Covelli Family Limited Partnership - Panera Bread

HALO | \$10,000 – \$24,999

Alvah H. & Wylene P. Chapman Foundation KeHE Distributors, LLC The New York Yankees Tampa Foundation, Inc.
Anonymous Fred and Laura Lay - Construction Services, Inc. of Tampa The Saunders Foundation
Richard and Cornelia Corbett Mabel and Ellsworth Simmons Charitable Foundation, Inc. The Trey Curry Foundation, Inc.
Crystal Springs Preserve Gene and Patsy McNichols Debbie and Joseph Troy
MaryLee Farrior Willy Nunn

HERALD | \$5,000 – \$9,999

Nancy Allen Clif and Terry Curry Intex Coatings Inc. Adam and Elizabeth Palmer Harvey and Cherie Schonbrun
Anonymous Don and Jan DeFosset Michael and Adrienne Johnson Carly Paugh Phil and Jenn Scott
Answerfirst Communications Inc. Florida Executive Reality Hope Foundation, Inc. KeHe Cares Foundation Vincent Pawlowski Tracy Sheehan
Morris and Michelle Bencini GTE Federal Credit Union Steven and Emily Kundrat Chandler Rapson Ruth and Martin Silbiger
Brian and Kristi Bullock Cynthia and Brent Hart Lykes Insurance, Inc. Gayle and Steve Ratcliff The MacKinnon Family Foundation
Mike Bunkley Hillsborough County Community College National Services Inc. Rays Baseball Foundation The Stacy Borell Humanitarian Foundation Inc.
S. Keith Vickery

HARP | \$2,500 – \$4,999

Ad Partners Ernst and Young Senator Tom Lee SBJ Resch Family Foundation Inc.
Jason Ainsworth Joseph Fanning Mary and Bob Sierra Family Foundation, Inc. Sherloq Solutions
Altar'd State - International Mall Amy and Joe Fattori Dawn and Bruce McDonald St. Pete General Hospital Radiology
Amalie Oil Company First Housing Foundation, Inc. MetLife Bryan Stern
Amgen Florida West Coast Golf Superintendent Association Jennifer Motsinger Daniel T. Sullivan
Jeffrey and Kim Anderson Florida Blue Charles and Lisa Mulfinger Synergy Florida
Apollo Medical Services Paul and Linda Haber Bill O'Neill Todd Taylor
Patrick and Malissa Arledge Hands Across the Bay Peak Power Services Scott and Amanda Teal
Bank of America Hillsborough County Bar Association, Inc. Scott and Jessica Peper The Bank of Tampa
Brighthouse Financial Hamilton Hunt Progressive Employment Management Company Brenda and Ty Trayner
Chris T. Sullivan Foundation. Inc. Greg and Pam Johnson Publix Super Markets Charities Walmart Store #5300
Mike and Julie Dunphy Jane and Robert Koy Siri and Bernard Rock David and Lori Wheeler
Kevin and Amy Edmonson Lashaholic Lashes, LLC Michael and Carolyn Rogan Joshua and Jen Wiggins

SPECIAL THANKS TO OUR 2018 / 2019 DONORS

GRACE | \$1,000 – \$2,499

Keri Albritton
Teresa and Ignacio Armas
Rosemary Armstrong and Morris Weinberg
Brion and Jamilyn Bailey
Bil Mar Station II, Inc.
Blue Goose Intl.
Edward and Deborah Branciforte
Shawn Brown
Kathleen Brownell
Todd Brymer
Phillip and Betty Casey
Steve and Wendy Catone
Seth and Angelica Chadwick
Carlton and Donna Cozart
Patrick and Ashley Crouch
Janet Davis
Bill and Karen Dean
Rosa Diaz
Kerri Dienhart
Wendy Dobreff

John Doherty
Dr. Gail Dudley
Don and Alisha Durrance
Melissa and Chuck Ernst
Feldman and Mahoney, P.A.
Paula Ferguson
James and Cecilia Ferman
Melanie and Erik Fischer
Ron Fleming
Charles and Kim Flouts
Steven and Lauren Galbraith
Joshua Garfield
Katya and Christopher Garrard
GFWC Valrico Service League
Frank and Terri Giardina
Gobu Consulting, LLC
Tim and Allison Green
DeDe Grundel
Linda Hanna and Joe Hafner
Bob and Linda Hawkins
Holy Innocents Episcopal Church

Indo American Foundation Of Tampa Bay
Kevin and Heather Jannarone
Jeffrey Allen Inc.
JL Marine Systems, Inc.
Kevin Kelly
Ladies for Schools Bowling League
Stephen Lawler
Michael Lawley
James and Diane Lippincott
Keven and Deborah Loveland
LV Thompson Family Foundation
Daryl Manning
Marie and Constantino Martinez
Masonic Park and Youth Camp Inc
Michael Nash
Our Town America
Parker Foundation
Nicholas Peters
Petitt Worrell Rocha Sheppard PLLC
Dan Petrick

Jean Pitcock
Judith and Michael Ploszek
Chad and Leesa Polley
Patti and James Raczkowski
Rivero, Gordimer & Company, PA
Robert Bithisel PA
Roy and Lydia Bors-Koefoed
Michael and Erica Shea
Gil and Betsy Singer
Smiles For Life Foundation
Craig Steffen
Calvary Tabernacle
TBIT
Carolyn and Henry Toebe
Mark Tubb
Judith Van Kampen
Walmart Store # 941
Walmart Store # 5826
Garry and Christine Welsh
Joe Wicker House Campaign
Michael Yates

GLORY | \$500 – \$999

Jeff and Michelle Aguiar
Amerifactors Financial Group
Barbara and George Baker
Bill Ballance
BD Associates
Andre Beaudry
Herb and Gloria Berkowitz
Breakthru Beverage
Brady Breaux
Buccaneer Linen Service Inc.
Tricia Cabral
Joseph and Julie Ciancanelli
Gary and Miky Clayman
Donald Conaty
DaVita Medical Group Of Sun City Center
Susan Dumelle Di

Brent and Monica Dunham
Fields Family Foundation
Michael Geis
Gordon Food Service
Kevin Gray
Amy and Brad Gregory
Winnett Hay
High Hopes in High Heels Inc.
Robert and Candace Hobbs
Susan and Paul Hoffstetter
Hunters Green Country Club
Kim and Donn Hutson
Dale Ingle
Intrastate Distributors Inc.
JP MorganJSM Services, Inc.
Zachary and Amy Kamish

Keiser University
John and Pamela Keiser
Matt Kelsey
Lara LaVoie
Sam and Deborah Lazzara
Leadership Hillsborough Inc.
Mary Loughlin
Erik Macpeek
Ashley Mahr
Malio's Prime Steakhouse
Manheim Tampa
Cynthia Maxey
Metrohm
Mihara & Associates Team TLC
Minor League Baseball Charities
Morgan Stanley

Paul and Kirsten Morin
Tiffany and Joe Myers
Timothy and Susan Nichols
Chase O'Malley
Leslie Rodriguez
Daniel and Holly Singer
Cathleen and Louis Suglia
SunTrust United Way
Synovus Bank
Tampa Bay Paralegal Association
Scott Teal
The Woman's Group
Thunder Marine
TIAA
Colleen Vasconcellos and John Wilson
Village Presbyterian Church

Rusty and Stacey Walker
Wallace, Welch, and Willingham
Randall and Deborah Zomermaand



SPECIAL THANKS TO OUR 2018 / 2019 DONORS

CHERUB | \$250 – \$499

ADG Acquisition Holdings LLC
Amazon Smile
Atlas Grills, LLC
Mike Azzarelli
Jimmy Baggett
Craig Baker
David Brown
Calvary Lutheran WELCA
James Carrol
Mike Compton
Kelly and Hunter Cone
Cynthia Crenshaw
Dee Crescini
Susan and Geoffrey D'Angelo
Chris Dobson
Fair Warning
Rex and Laurin Farrior
Ash and Sheila Fischer
Florida Medical Clinic Foundation of Caring Inc.
Joshua Fogg

Gerald Thaxton
Butch and Mary Ana Gilbert
Edward and Elizabeth Gonzalez
Judy Gray
Greystone Healthcare Management Corp
James and Michelle Griffin
Barry and Melissa Hamel
Hatch Chile Co., LLC
Jacklyn Haytreas
Jon and Tina Heaser
Peggy Watson and James Heuker
Iron Men Plumbing
Kent and Carolyn Johnstone
Ines Kanarek
Alana and Mitchell Kaplan
Louis Langermann
Corrine Lehmann
Ron and Patty Linde
Catherine Macyko
Stephen and Hope Marshall

Lester and Lydia Martinez
Terry McFatter
Pattie Meek
Nick and Patricia Meriwether
Helen Muessel
Nelson Mullins Broad and Cassel
One Source Sales and Marketing Company
Cameron O'Neill
Cindy Osman
April Paige
PANGO Sales, Inc.
Pathways to Growth
Pediatric Associates of Tampa Bay
Tannia Peeples
Phillies Florida LLC
Peter and Elise Raspitzi
Kristen and Andrew Read
Donna Rogers
Joseph and Kristen Savino
Gary Schneider

Anju Senan
Christopher Shirley
Brandi Sondgerath
Southside Riders MC Tampa LLC
Lindy and Brad Sperry
Ernestine Stevens
SWAP
Temple Terrace Lodge #330 F & A M
Stephanie Walker
Dean and Barb Warner
Pier Westra
Juliet Wilks
Janet and James Zimmerman



MEMORIAL GIFTS

Maxine Archibald
David Archibald

Ryan Holmes
Teri and Charles L' Homme

Dottie Berger MacKinnon
Jean Pitcock

David Stevens
Kathy Carr
Nancy and Gary Beauchamp
Leila and Elmer Leverett
Ernestine Stevens
Brenda and Thomas Watson

Cynthia Conaty
Donald Conaty

Momma Hughes
Connie Hughes

Carlotta Macon
Collete Macon

Bill Enzor
Nicole Gabel
Debbie and Joe Troy

Lois Krutcher
Jean Pitcock

Marie Norton
Barbara and George Baker

Bill Stuart
Elizabeth Seifert

Carlos Garcia
Iris Kolacsky

Delores Kundrat
Emily and Steve Kundrat

Janet Britton Rodgers
Michael Kelly
Christian Reed
Steve Walz
Dr. Michele Wolf

Jerry Sweatt
CRI Screening and Friends



SPECIAL THANKS TO OUR 2018 / 2019 DONORS

HONORARY GIFTS

Abigail Cutchens

Stephanie Clark
Alexander Ledford

Doris, Don and Jeffery

DeDe Grundel

Jakob, Ava and Isabel Hilton

Barbara Willett

Jamison and Eva

Sheila Redfearn

Kaylee's Kid's Around the World

Julie Belan
Ashley Gerry
Brad Kline
Rebecca Ledford

Kazbour Girls

Anna Shirina

Cass Kelly

Kevin Kelly

Ruby Louise

Beatrice Gillespie

Kristina Moran's Baby Shower in memory of Trey Curry

Meredith Romano

Ariel and Brandon Pierpant's Wedding

David Brewster
Brian Brownschidle
Luis Crespo
Daniel Graciaa
Meredith Hurley
Kathleen and John Kallinikos
Andrew Mathews
Stilian Morrison
Kyle Newkirk
Erik Arroyo Nunez
Jonathan Rinkinen

Krista and Arthur Schultz

Janine Mills

Diane and Al Schuman

Mathew Schuman

Tracy Sheehan

Anne Dougherty

Bill Shirley's Birthday

Christopher and Kris Shirley

Gil Singer

Rosemary Armstrong and
Morris Weinberg

Alicia and Nicole Strong

Bernadette Strong

Uncle Hammer

Mark Urbaniak

Helen Varsalona

JoEllen and James Carlson

Homes By WestBay

On behalf of their home buying customers

Lakeshore Ranch, Land o' Lakes
Connerton, Land o' Lakes
Bexley, Land o' Lakes
Hawks Fern, Riverview
Starkey Ranch, Odessa
La Collina, Brandon
Legacy Ridge, Brandon
Waterleaf, Riverview
Triple Creek, Riverview
Waterset, Apollo Beach

Thank you to those who let A Kid's Place be a part of their special day! Our social media friends and family raised funds to create special days for our children. A Special thanks to those who honored their loved ones and helped foster children too.

FACEBOOK GIFTS

Brittany Anderson
Bailey Bannigan
Rodereck Blassingame
Erin Booker

Sarah Ferranto Brennick
Karla Delisse
Dennis Hall
Kaylee Ann

Schaad Hasenour
Camdyn Hasenour
Jessie Laing
Ophelia Lucas

Bruce McDonald
Samantha Mellen
Nicolette Mercado
Carolyn Stein Miller

Joanne Wolf Roberson
Kendall Southall
Laura Spruill
Sam Torkitt
Collen Vasconcellos

Dee Walker
Susan Wanstall
Michael Webber
Stephanie Welch
Sherry Wilson

SPECIAL THANKS TO OUR CUMULATIVE DONORS

We extend heartfelt thanks to all of our faithful supporters who have generously donated to A Kid's Place over the years. The following individuals, corporations and foundations donated between July 1, 2006, through June 30, 2018, with cumulative totals of \$5,000 or more throughout the years. Thank you for being a beacon of light for the children living at A Kid's Place.

\$1,000,000 AND UP

A.D. "Sandy" MacKinnon

\$500,000 - \$999,999

Dorothy Ebersbach Irrevocable Trust
LazyDays Employee Foundation Inc.
The Corbett Family Charitable Foundation

\$350,000 - \$499,999

Don and Erika Wallace Family Foundation
Gene and Patsy McNichols and Friends
The MacKinnon Family Foundation
The Trey Curry Foundaion
Jon Yob

\$100,000 - \$349,999

Children's Cancer Cooperative, Inc.
Crystal Springs Preserve, Inc.
Dorothy Thomas Foundation, Inc.
Greater Brandon Community Foundation, Inc.
Hillsborough County Sheriff's Office
Homes By WestBay LLC
Interfaith Social Action Council Of
Sun City Center, Inc.
KeHE Distributors, LLC & KeHE Cares
Fred and Laura Lay
Construction Services Inc. of Tampa Bay
Dottie Berger MacKinnon
Michelin Golf Classic, Inc.
Covelli Family Limited Partnership - Panera Bread
Quality Distribution, Inc.
Sammy Sullivan Charities
Tracy Sheehan
Tampa New Auto Dealers Association Inc.
The Bank Of Tampa
The New York Yankees Tampa
Foundation, Inc.
The Sandy River Charitable Foundation
The Spurlino Foundation

Robert Thomas
Debbie and Joseph Troy

\$50,000 - \$99,999

BB&T
Tony and Beth Bradburn
John and Laurie Calfee
Richard and Corneila Corbett
Flordia Blue
Harry Free
Hands Across The Bay
Lightning Foundation
Lokey Charities, Inc.
Regions Financial Corporation
Arthur and Krista Schultz
TECO Energy
Walter Energy, Inc.
Julie and Steven Weintraub

\$25,000 - \$49,999

AAA Westshore
Amalie Oil Company
Anonymous
AT&T
Phillip and Betty Casey
Charity Chicks
Community Foundation Of Tampa Bay
Donald Conaty
Michael and Sue Dougherty
ECMC Foundation
MaryLee Farrior
Florida Medical Clinic
Foundation of Caring Inc.
Thomas Free
Gary Wright
Cynthia and Brent Hart
The Stacy Borell Humanitarian
Foundation Inc.
JMJ Site Development

Greg and Pam Johnson
Gary and Melody Johnson
Just In Queso Foundation
Krewe Of Pandora
Lazydays RV SuperCenter
Wilhelm Nunn
One World, One Child
Adam and Elizabeth Palmer
PNC Foundation
Precise Construction
Publix Super Markets Charities
Gayle and Steve Ratcliff
Ruth and Martin Silbiger
Campegia Sugar-Van Calcar
Summerfield Crossing Golf Club
Sun Capital Partners
Foundation, Inc.
Suncoast For Kids Foundation
The USAA Foundation, Inc.
Mark Tubb
United Healthcare Services, Inc

\$15,000 - \$24,999

2012 Tampa Bay Host Comm.
Nancy Allen
Anonymous
Broad And Cassel
Children's Board of Hillsborough
County
Chris T. Sullivan Foundation. Inc.
Cigna
Dee Crescini
DeBartolo Family Foundation, Inc.
Gerald Divers
Doyle Carlton III
Florida Executive Reality Hope
Foundation, Inc.
Charles and Carol Funk
Connie and Craig Gage

Gardner Asphalt Corporation
DeDe Grundel
Hickman Structures, Inc.
Intex Coatings Inc.
JP Morgan Chase
Steven and Emily Kundrat
Senator Tom Lee
Nadia and James Loney
Mabel and Ellsworth Simmons
Charitable Foundation, Inc
Mary and Bob Sierra Family
Foundation, Inc.
Dawn and Bruce McDonald
Jerry and Linda McGee
John McKibbin
Andrew and Julia Menard
MetLife Foundation
Mosaic Fertilizer, LLC
Mutual Of Omaha Bank
Sue Nabakowski
Olin Mott Tire Stores
RBC Capital Markets, LLC
Kimberly and Roger Rivard
Harvey and Cherie Schonbrun
Fran and Paul Senory
Squire Sanders
The Bank Of Tampa
The Florida Aquarium
The Roundtable Charities Of
Greater Brandon, Inc.
The Saunders Foundation
Total Software Solutions Inc.
Ty and Brenda Trayner
Phil and Diane Wasserman

\$10,000 - \$14,999

Aetna Group Insurance
Keri Albritton

SPECIAL THANKS TO OUR CUMULATIVE DONORS

We extend heartfelt thanks to all of our faithful supporters who have generously donated to A Kid's Place over the years. The following individuals, corporations and foundations donated between July 1, 2006, through June 30, 2018, with cumulative totals of \$5,000 or more throughout the years. Thank you for being a beacon of light for the children living at A Kid's Place.

Alvah H. & Wyline P. Chapman
Foundation
Amerifactors Financial Group
Answerfirst Communications Inc.
AT&T Telecom Pioneers
Bailey Family Foundation, Inc.
Bank Of Florida
Bank United
Bayshore Technologies, Inc.
Emily and Jonathan Borell
Broadrick Family Foundation
Brian and Kristi Bullock
Mike Bunkley
Columbia Restaurants
Clif and Terry Curry
Janet Davis
Don and Jan DeFosset
Ernst & Young LLP CPA'S
First Housing Foundation, Inc.
Florida West Coast Golf
Superintendent Association
Linda Hanna and Joe Haffner
Henderson Family Foundation
Hillsborough County Bar
Association, Inc.
Holy Innocents Episcopal Church
Hunter Truck Sales & Service, Inc.
Italiano Insurance Services, Inc.
Jacob Schmidlapp Foundation
Kearney Companies
Kohl's Cares For Kids
Paul Lankford
Leadership Tampa Bay
Alexander and Melissa MacKinnon
Richard and Kathy Marx
Mattress Firm
Ticket To Dream Foundation
Bill O'Neill

Vincent Pawlowski
Peak Power Services
Frank and Paula Perry
Judith and Michael Ploszek
PricewaterhouseCoopers LLC
John Pricher
Rays Baseball Foundation
Siri and Bernard Rock
Ruden McCloskey Smith
Schuster & Russell, P.A.
SBJ Resch Family
Foundation, Inc.
David Schlaifer and
Mallory Tai Taylor
Gil and Betsy Singer
Star Distribution Systems
Lokey Nissan
Steel Valley Tank
Michael and Patricia Sullivan
Sunbelt Rentals Inc.
Tampa Tank
Stella Ferguson Thayer
The Matred Carlton Olliff
Foundation
The Yerrid Foundation, Inc.
Thomas Lamb -
Design & Development, Inc.
T-Mobile
Carolyn and Henry Toebes
Wells Fargo Foundation
Windstar Homes, Inc.
Woodbery Carlton
Foundation, Inc.

\$5,000 - \$9,999
100 Women Who Care
Tampa Bay
Ad Partners

Adams & Diaco, P.A.
Jeffrey and Kim Anderson
Art and Kary Andrews
Kimberly and Mark Andrzejewski
Shannan Aprile
Fritz and JoEllen Archerd
Patrick and Malissa Arledge
Rosemary Armstrong
and Morris Weinberg
Aston Martin Jaguar
Bank of America
Bell Shoals Baptist Church
Morris and Michelle Bencini
Gail Bernucca
Biospine Foundation, Inc.
Blue Goose Intl.
Martin and Janie Borell
Brenner Tank LLC
Bright House Networks, LLC
Brighthouse Financial
Beverly Britt
Busch Gardens - Sea World (SWBG)
Margarita Cabrera - Cancio
Cambridge Christian School
Jenna Carter
JPMorgan Chase
Citibank
Tripp Cohagen
Jason Cohen
Community Health Centers
Sandra Cross
Frank Crutcher
Cypress Point Community Church, Inc.
Michael and Darcy Davis
Bill and Karen Dean
Deanna Dean
Don Defossett
Deloitte Services LP

Rosa Diaz
Craig and April Diemer
Digital Insurance
Electronic Funds Source, LLC
Gary Enzor
Melissa and Chuck Ernst
Gary and Sherry Fairchild
Amy and Joe Fattori
Ami Forte
Fowler White Boggs Banker, P.A.
Bryan and Debra Sue Fredrick
Bryan Garvin
General Federation Of Women's Clubs
Shanna and Bryan Glazer
Amy Gregory
GTE Federal Credit Union
Lee and Tracy Gunn
Gary and Marguerite Harrod
David and Nicole Hasselbach
HCSO Charities Inc
John Head
Hillsborough County Community College
HP Hood LLC
Holland & Knight
IT Authorities, Inc.
Jabil
JL Marine Systems, Inc.
Michael and Adrienne Johnson
JSM Services, Inc.
Kiwanis Club Of Tampa
Jane and Robert Koy
L V Thompson Family Foundation Inc.
Tara and Tod Leiweke
Earl Lennard
Christopher Ligori
George Lutich
Manheim Tampa
Michael and Nanci March

SPECIAL THANKS TO OUR CUMULATIVE DONORS

We extend heartfelt thanks to all of our faithful supporters who have generously donated to A Kid's Place over the years. The following individuals, corporations and foundations donated between July 1, 2006, through June 30, 2018, with cumulative totals of \$5,000 or more throughout the years. Thank you for being a beacon of light for the children living at A Kid's Place.

Marie and Constantino Martinez
Materials Handling Group, INC
Brian Megibow
MetLife
Saskia and Mark Mighell
Morgan Stanley
Mortgage Contracting Services LLC
Murex
National Services Inc.
Christine Naylor and Tim Sheehan
Northern Trust
Wendy Oliverio
Oracle America, Inc.
Carly Paugh
Thomas and Kay Paul
Scott and Jessica Peper
Dana I. Philip

Phillip Roy Financial Services LLC
Joseph Pittman
Plantation Ford
Polar Service Centers
Primrose School Of Bloomingdale
Chris Puccio
Chandler Rapson
Red Vector
Reed Transport Services, Inc.
Rivero, Gordimer & Company, PA
Rolling Pin Kitchen Emporium
Royal Caribbean Cruises
David and Tara Ruberg
Lindsey Gibson Ryan
Sanwa Growers, Inc.
Alta Schlemmer
Margaret Schultz

Margaret Schultz
Phil and Jenn Scott
Seffner Christian Academy
Shumaker, Loop & Kendrick, LLP
Siteline Building Solutions LLC
Smiles For Life Foundation
Sherloq Solutions
Michael and Cathy Stahl
Staples Foundation
Daniel T. Sullivan
Joseph T. and Nancy Sullivan
SunTrust Banks, Inc.
Kimberly and Jim Tagg
Tampa Bay Buccaneers
Tampa Bay Trial Lawyers Association
Tampa General Hospital
The Surala Group

The Tampa Woman's Club Inc.
The TJX Foundation
Claudia and Russ Thomas
Leigh Ann Tucker
Ronald Vaughn
Verizon Foundation
S. Keith Vickery
Walmart #2387
Walton Development and Management
Dean and Barb Warner
Wayne Automatic Fire Sprinklers Inc.
David and Lori Wheeler
Joseph Wheeler
Paul and Gail Whiting
John and Julie Wieland
Bill and Jody Williams
Woman's Club, GFWC New Tampa



THANK YOU FOR 10 YEARS & FOR SUPPORTING A KID'S PLACE!

